

SYDM3109 digital door lock

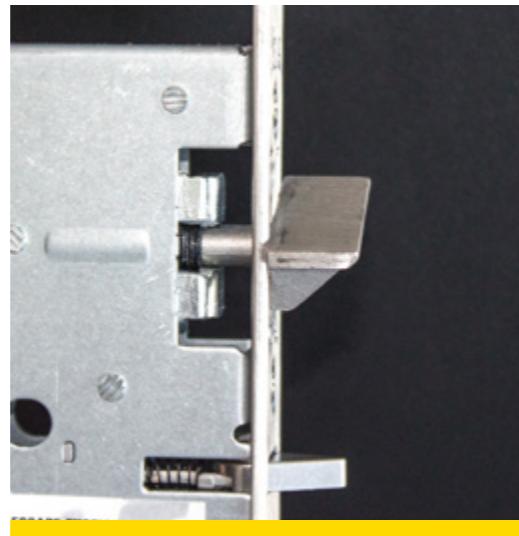
fitting instructions

STEP 1



Select escape side (inside of door).
Screws must be fitted on inside side of lock body.

STEP 2



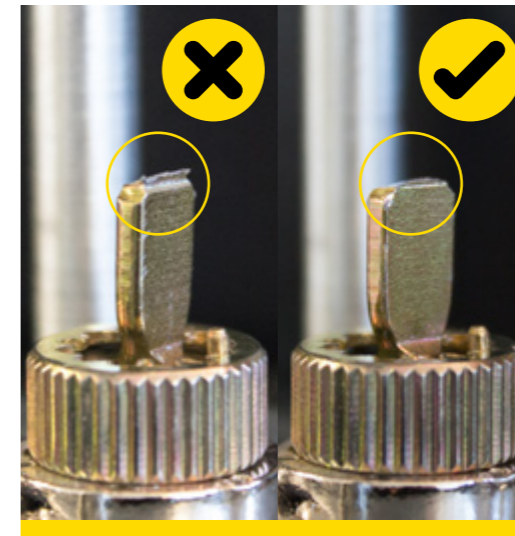
Hand the latch.
Pull and twist to change direction.

STEP 3



Fit lock body in door.
Take care not to trap the cable between lock body and door.

STEP 4



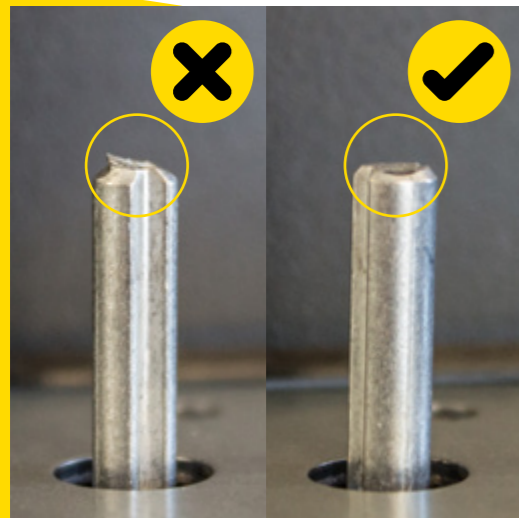
Cut tail bar on external half of lock.
A 40mm thick door is the last cut line.
Fit external keypad onto door.

STEP 5



Fit the steel plate on inside of door to hold the external keypad half in place.

STEP 6



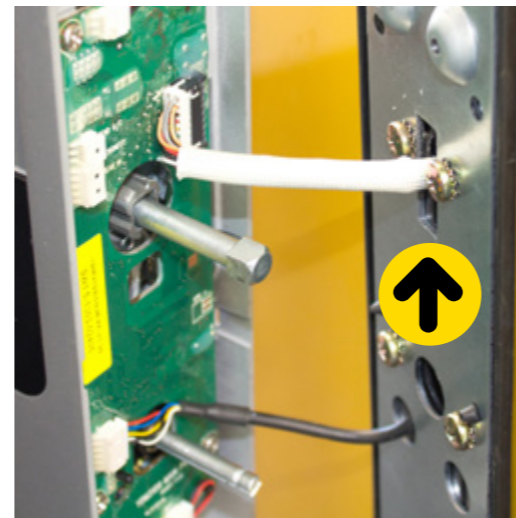
Cut internal tail bar.
A 40mm thick door is the last cut line.

STEP 7



Connect the white and black cables to the inside half.

STEP 8



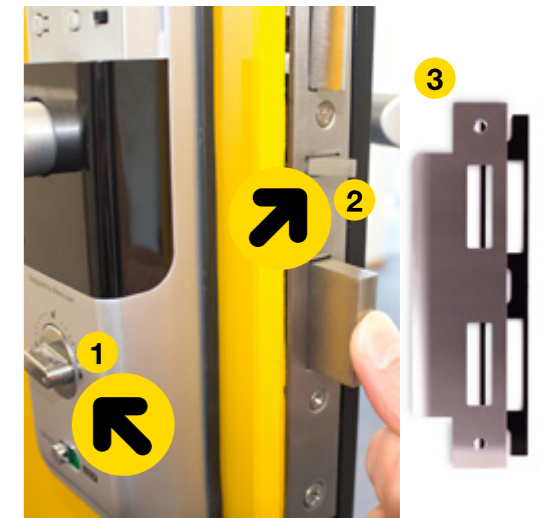
Push the spare white cable into the hole in the door.
Ensure the wires won't be nipped when the internal half is fitted.

STEP 9



Put batteries in. Ensure they are the correct way around.
Make sure the middle button under the battery cover is sticking out.
The green colour should be showing on the lock/unlock switch.

STEP 10



1. Throw the bolt manually.
Test the bolt can't be pushed back.
Enter 1234567890* on keypad to unlock.
2. Press and hold the triangular strike detector. The bolt should lock. Test escape function by operating internal lever. Lock should unlock.
3. Aluminium strike kit shown is highly recommended for aluminium frames.
Part number: SYDMSK01

If you have any questions, please contact your ASSA ABLOY representative.

For more information or to find out about our range of accessories for this product, visit our website at www.assaabloy.co.nz